



Workspaces where your people are our priority.

The best workspaces in London,
fully managed for you.

gpe.co.uk/fullymanaged

GPE.
Greater together

Take a look around

03 A warm welcome



04 Make yourself comfortable



06 Why us



07 Fully managed and fully yours



10 Relax, you're in safe hands



11 Our locations



12 Plug in and go



13 sesame™ app



15 Working towards a better world



16 Exceptional service as standard



17 Get in touch



Simon Rowley, Director



A warm welcome

Every business is different, with its own unique needs. That's why we take time to get to know you and your business, so you can step into a space that's fully yours from day one.

Want a hassle-free experience?
Then GPE Fully Managed is for you.

You'll have your own front door, meeting rooms, kitchen, and plenty of space to call your own.

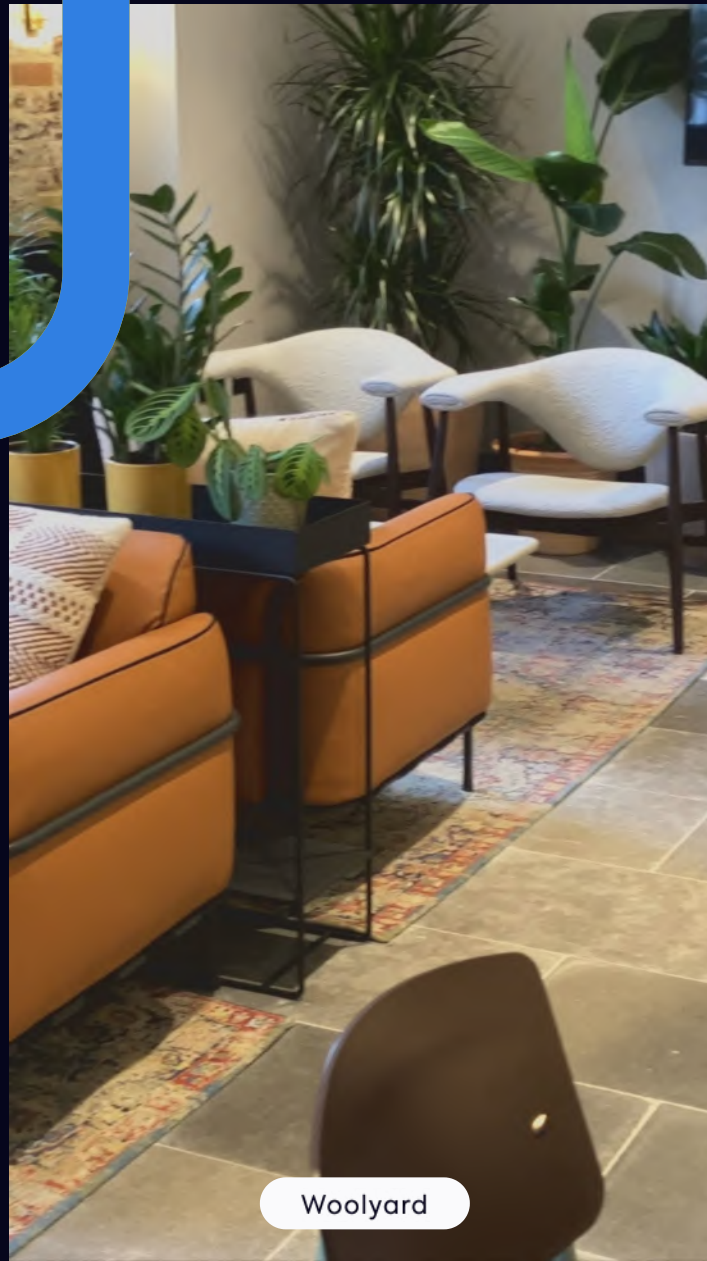
Our in-house teams have put their all into expertly designing and crafting your workspace, giving you a beautifully furnished, sustainable space your people will love, delivered by one of London's most respected property owners.

You can relax knowing that we are knowledgeable and experienced and will take care of everything - from a warm welcome to getting to know you and your business.

Your people are our priority. Think of us as an extension of your team - here to make sure you're well looked after; and your workspace is, and remains, just as you want it.

Ultimately, we make your life easier, so you can focus on doing what you do best - running a thriving business.

Simon Rowley
Director of Flex Workspaces
GPE Fully Managed



Make yourself comfortable

Step into a furnished, sustainable workspace that's fully yours and hassle-free.

6 reasons to choose GPE Fully Managed



1 – Fully managed and fully yours

Say hello to your furnished workspace that's exclusively yours - with your own front door, meeting rooms, and kitchen. Our Fully Managed service is a truly hassle-free experience - from making sure the teas and coffees are stocked to taking care of those odd jobs. We're here to keep everyone happy and everything up to scratch, so you don't have to.

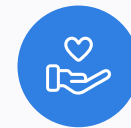
[How we make it hassle-free](#)



2 – All-in-one bill with no hidden extras

Say goodbye to multiple bills. Each month you'll receive just one all-inclusive bill from us, and for added peace of mind, your bill remains fixed for your contract period. Plus, there are no upfront costs for getting your space move-in ready; we've got it all covered. It all helps to make managing your costs that little bit easier.

[See what's included](#)



3 – Relax, you're in safe hands

We've been doing this for a long time. Our in-house experts put their all into curating the perfect experience, so you can enjoy market-leading workspaces. We also own and manage our buildings, so you'll always deal directly with us. With a great range of spaces and locations across London, we'll help you find the perfect workspace for you today and as you grow.

[Learn more about us](#)



4 – Plug in and go - your tech’s all sorted

You get safe, secure and ultra-fast wireless connectivity so you can work seamlessly from day one; with IT help on hand. Your meeting rooms will be set up and ready to go with state-of-the-art video conferencing hardware. Plus, everyone gets access to sesame™, your award-winning workplace app, with desk booking as standard. Consider your tech sorted.

[Head over to the tech](#)



5 – Working towards a better world

As an environmentally-conscious company, we prioritise sustainability and refuse to engage in greenwashing. We’re working towards being a net zero carbon business by 2030 and are taking various measures to get there - such as using 100% renewable energy. We’ll also work with you to reduce your carbon footprint too, creating healthier and more sustainable environments where everyone can thrive.

[How we’re reducing our impact](#)



6 – Exceptional service as standard

Your people are our priority. It’s why we’ve developed our customer promise — the values by which we operate — so we can deliver you a great experience. Through passion and dedication, we have proudly achieved a Net Promoter Score of 50.0, setting a standard way ahead of the office industry average of just 6.9. So you can be confident your people will be well looked after.

[Learn more about our services](#)





Discover our Fully Managed offering



Beautiful Workspace



- ✓ Your own front door, kitchen and meeting rooms
- ✓ A fully furnished workspace
- ✓ State-of-the-art meeting room technology and hardware
- ✓ No upfront fit-out costs
- ✓ Includes quality fixtures and fittings
- ✓ Spaces designed with sustainability at the core
- ✓ Carefully-curated interior design
- ✓ Expertly-designed, inclusive environment



The Ultimate Experience



- ✓ Dedicated Customer Experience team
- ✓ Industry-leading customer service
- ✓ Shared amenity space*
- ✓ Unlimited teas and coffees
- ✓ Regular locally-sourced snacks and treats
- ✓ sesame™ - your workspace app
- ✓ Fast, secure broadband and private Wi-Fi
- ✓ Curated on-site social events*



Exceptional Management



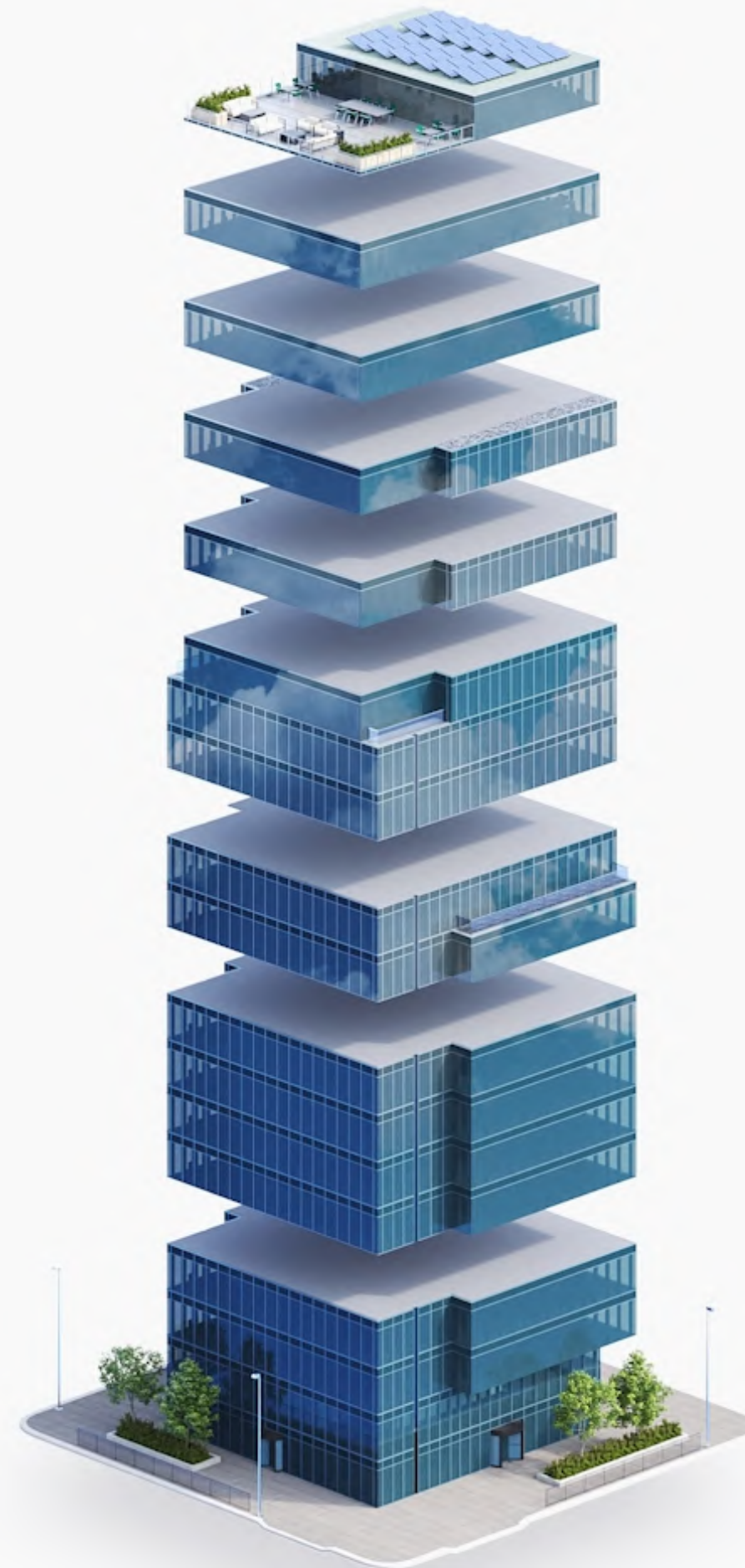
- ✓ Utilities
- ✓ Cleaning
- ✓ Security
- ✓ Expert IT support
- ✓ 24-hour help desk
- ✓ Handyman services
- ✓ Landscaping and indoor plant maintenance

*available at selected buildings



It's all included in one bill, no hidden extras

With your rent, rates and all your utilities, tech and building needs covered, you can focus on continuing to make your business thrive.



- Events, Food and Beverages
- Security
- IT Connectivity and Support
- Utilities
- Cleaning and Maintenance
- Fully Furnished Workspace
- Building Service Charge
- Business Rates
- Rent

**Step into a
space that's
fully managed
and fully yours.**





Relax, you're in safe hands



Choosing a new workspace is a big decision and you want to know you're in safe hands. Well, you've come to the right place.

We've been creating best-in-class spaces in London since the 1950s, so you could say we've earned our reputation. We're proud of our Net Promoter Score of 50.0 - streets ahead of the industry average of just 6.9.

And, unlike many providers, we own and manage all our buildings and have an in-house team, so we can curate the whole experience from the moment you step inside to the moment you leave. You'll also always deal directly with us.

In 2018 our forward-thinking, experienced team began delivering market-leading furnished spaces.

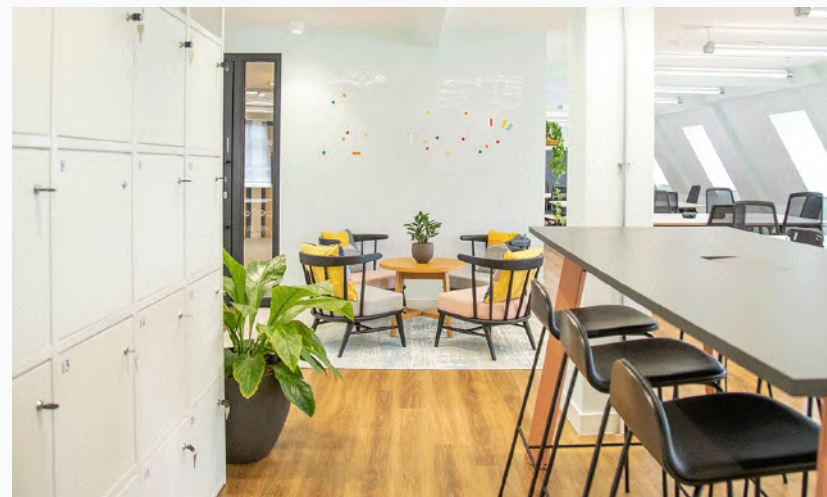
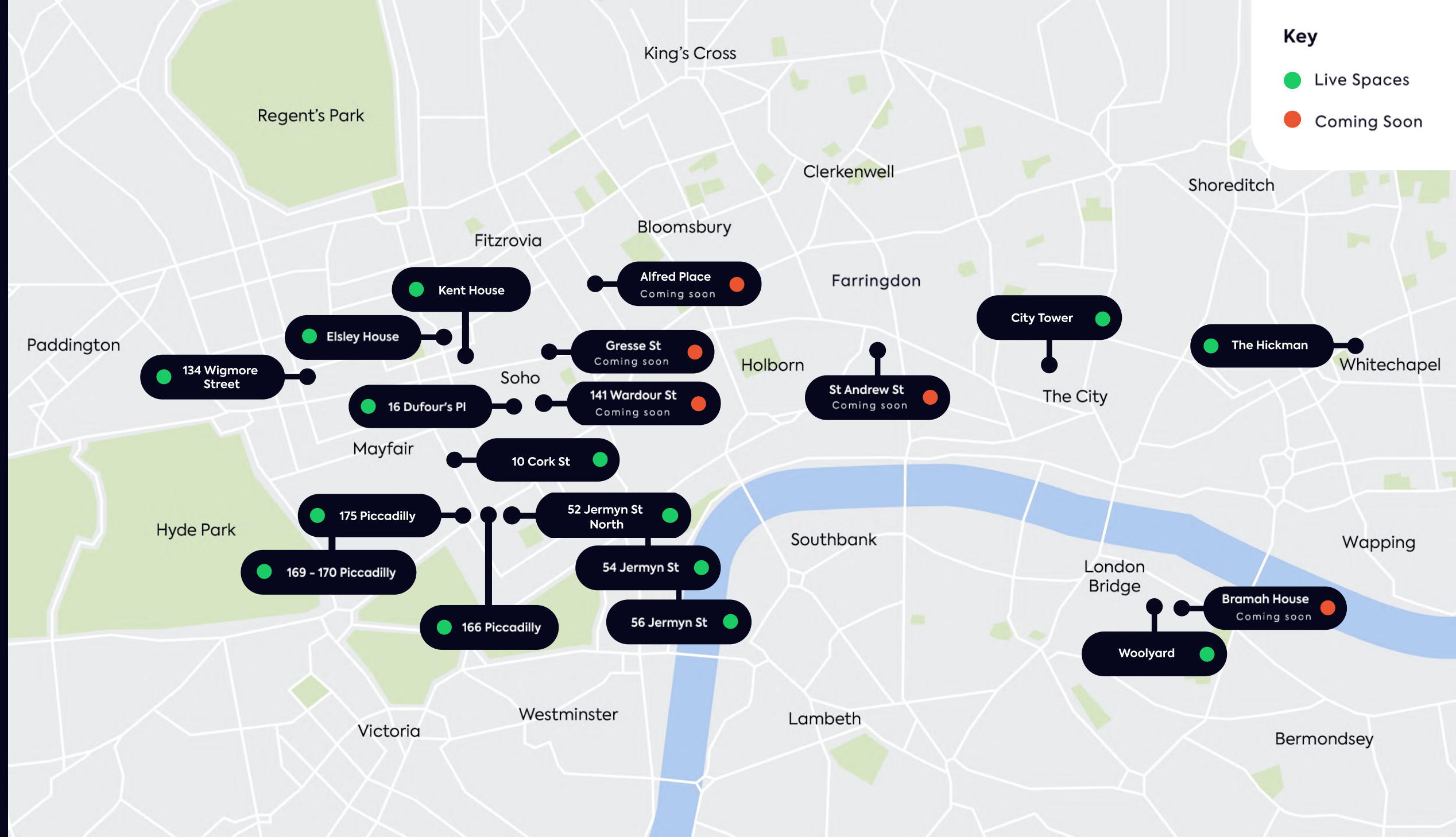
Today, we have many of these workspaces, fully managed by us, all over the capital. With new properties in development, our ever-expanding portfolio will double by 2024, so we can help with your business needs today and as you grow.

All this is why some of the world's biggest brands trust us to provide their workspaces.





Market leading workspaces across London



Take a look at the availability of our fully managed workspaces

[See our workspaces](#)



Plug-in and go - your tech's all sorted



Work seamlessly from day one, with market-leading tech to keep you and your people connected.



State-of-the-art video conferencing

A must for hybrid working. All your acoustically-treated meeting rooms will be ready to go, with state-of-the-art video conferencing hardware, plug and play connections and sleek wall-mounted screens.



Tech support when you need it

Our engineers will be on-hand to get your tech working seamlessly when you move in. But they don't stop there. They'll onboard your teams, get everyone set up and business-ready, and can provide ongoing support when you need it.



The speed you need

Every business is different, that's why you can choose the bandwidth that's right for you. 100Mbps shared internet comes as standard, but if you need dedicated bandwidth or greater capacity, just ask. We've got your Wi-Fi sorted too; with multiple networks included in your package, you can set up your business exactly how you want it. Every workspace comes with dual diverse fibre that's proactively monitored 24/7, so it's safe and secure, as well as speedy.



Kent House

Introducing sesame™ - your award-winning, smart workplace app. Giving all your team contactless building access and employee benefits*.



Contactless access*

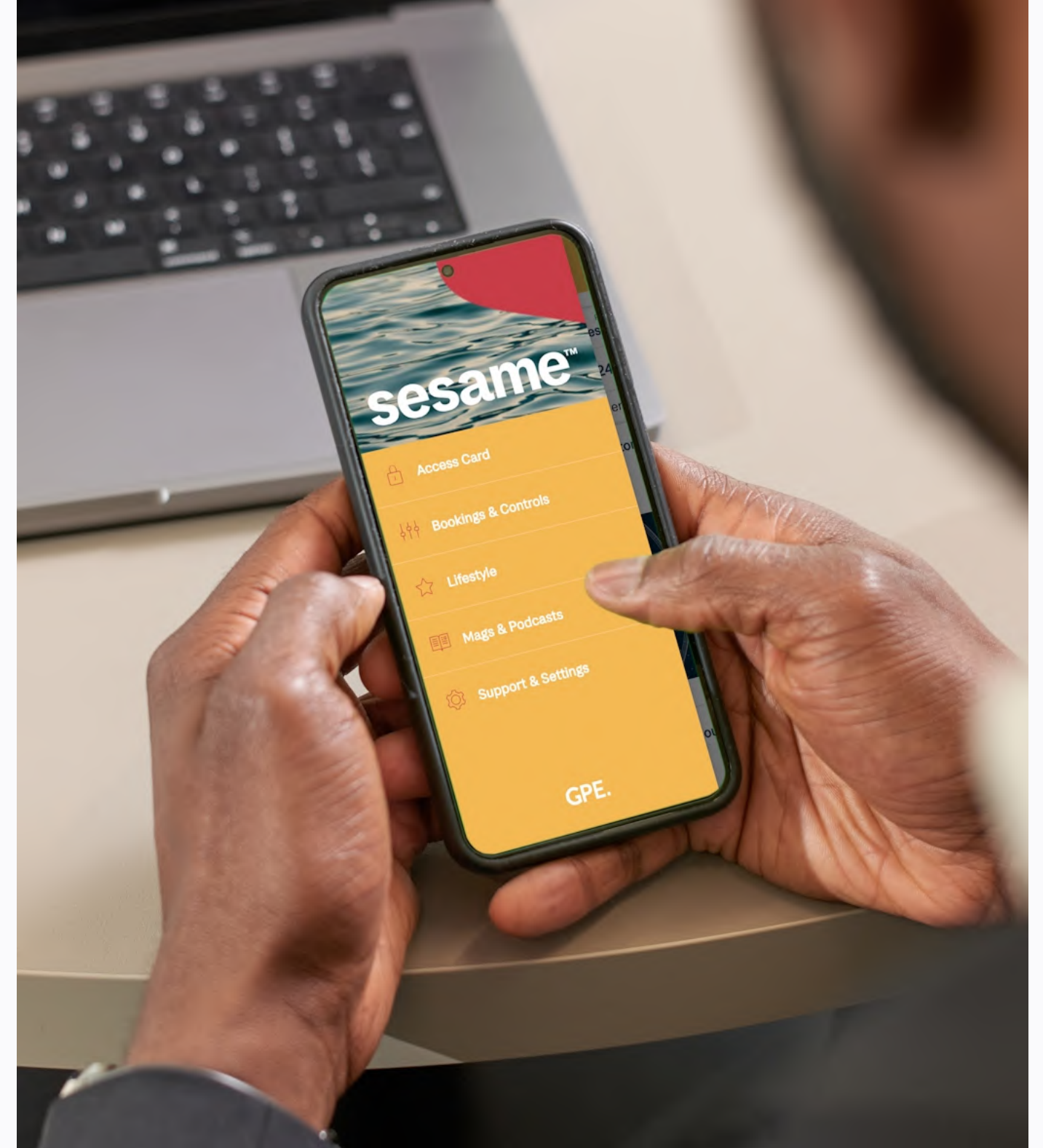
One tap and you're in. No signing in. No key fob. Or building access cards. Just your phone and you're ready to go.



Employee benefits*

Discover local offers, events and new openings at a touch of a button. Your employees will never be short of things to do, and they'll save a pretty penny too.

*Building dependent



Keep your people happy and connected



Tahnee Anderson, Wunderkind. Current Customer.

"One of the great things about GPE workspaces is that it feels really individual and personalised."



Oliver Foster, Pagefield. Current Customer.

"We have been so impressed with GPE from day one to now, negotiations were very smooth, we had lots of questions which were answered very quickly, we've had various changes we've made to our space which has been done really efficiently."



Working towards a better world



Workspaces that prioritise the environment, community and wellbeing of your team.

We're on a mission to shrink our carbon footprint and we're excited to work with you so you can reduce yours. Together, we can make a positive impact on the environment.

When it comes to environmental performance, we don't have time for greenwashing. We'll always be upfront about how our buildings perform - keeping it real and transparent.

Your goals and ours

We're committed to becoming a net zero carbon business by 2030 and to crafting spaces that are not only healthier, but more inclusive too.

You can be confident we prioritise minimising carbon emissions right from the start. Our team of sustainability experts are here to proactively work with you to reduce the carbon footprint of your workspace, and provide on-going support as you strive to achieve your own sustainability goals. Count on us to be by your side every step of the way.

Future London

We acknowledge the changing climate and the need to adapt our businesses. We believe that we can create spaces that not only meet the needs of today but are also well-prepared for the challenges of tomorrow.

Restore and reuse

We're big advocates of circular thinking - it's at the core of our design process. Our passion lies in minimising waste and embracing sustainability.

We're proud to use renewable energy to power all our buildings and you'll discover a unique touch—pre-loved furniture and fittings that have been given a second life. Each piece carries its own story, adding character and charm.

Through reusing, repurposing and recycling, we strive to make a positive impact on the environment and create spaces that are both sustainable and full of character.





Exceptional service as standard

Contents

GPE Fully Managed

Your wellbeing is our priority

Life is all about balance. Your Customer Experience Manager will help keep your team happy and healthy with a programme of wellbeing initiatives, charitable fundraisers and fun socials throughout the year, so your workspace is a happy and vibrant place to be. And did we mention, your furry friends are welcome too?

Purposeful partnerships

We pride ourselves on creating inclusive, welcoming spaces and partner with some fantastic organisations that help us to deliver truly diverse workspaces.

We're passionate about working closely with our thriving local communities, supporting both local businesses and social enterprises like SEND Coffee and Nemi Tea. By choosing a Fully Managed workspace, you help these fantastic businesses every day.

Our partnerships include:



Send Coffee

Nemi Tea

Purple

Sunflower

punchy

LUMINARY BAKERY

Blooming-lovely spaces

Green spaces improve your wellbeing. Fact. That's why you'll find lush green spaces in all our buildings - inside and out. With gorgeous outdoor spaces and beautiful indoor planted displays.



16 Dufour's Place

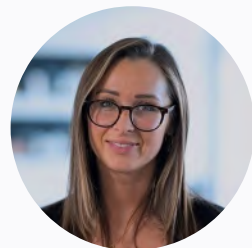
Get in touch

We hope we've piqued your interest, but it's only just the beginning.
We'd love to show you more. Get in touch to book your viewing today.



David Korman

+44 (0) 7435 939 956
david.korman@gpe.co.uk



Grace Tomlinson

+44 (0) 7871 678 728
grace.tomlinson@gpe.co.uk



Molly Maguire

+44 (0) 7887 841 816
molly.maguire@gpe.co.uk

[Talk to us](#)



**Find a space that's fully
yours. More locations
across London.**

[See availability](#)