



20/30 Great Titchfield Street, Fitzrovia, W1W 8BF

This is Elsley House

A Fully Managed workspace
where your people are our priority.

gpe.co.uk/portfolio/elsley

Contents

03 What's in your building



04 Why us



06 Availability schedule



07 Floorplan



09 Location



14 Get in touch



Art deco meets elegance in Fitzrovia.

A unique location like no other. In an area that is rich with history and culture, Elsley House is the beating heart for all of your business needs, with style and character that is certain to leave a lasting impression.



Prime location

Close to Oxford Street and Tottenham Court stations, Elsley is in a buzzing, central location.



Showers and lockers

So you can start your day fresh and ready to go.



Cycle storage

Secure cycle spaces to end your journey by bicycle.



Communal courtyard and rooftop terrace

Private, central courtyard and rooftop terrace to relax, socialise and enjoy.



24 hour access and security

When business never stops, come and go as you please.



On-site receptionist

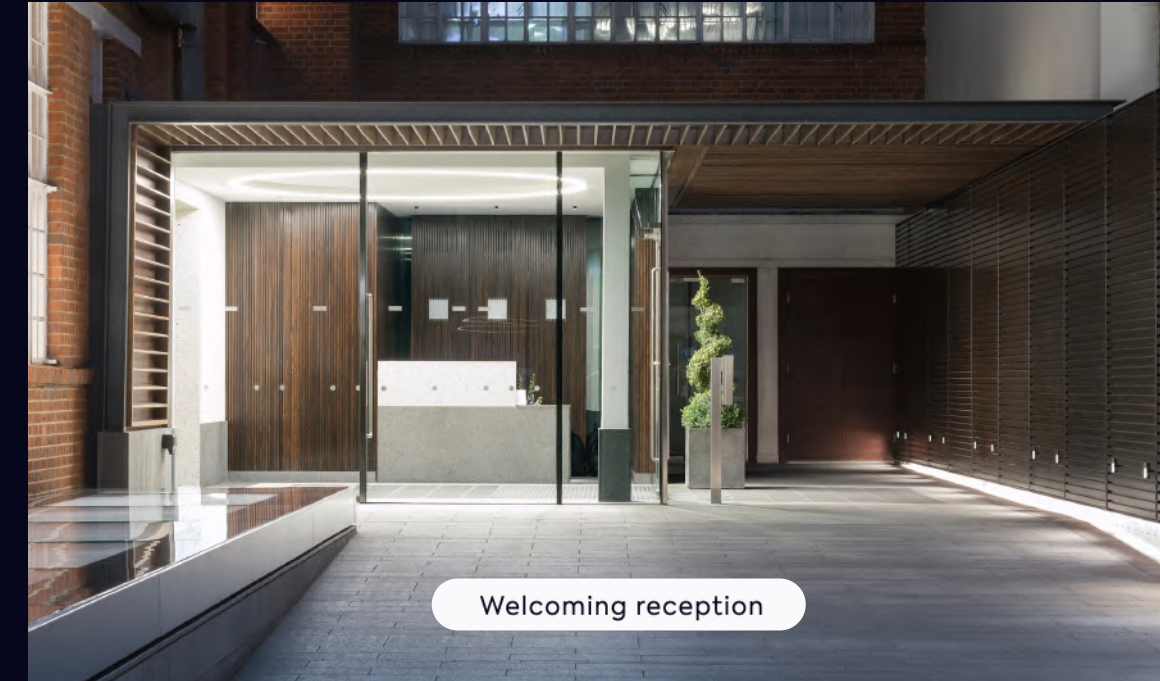
Receptionist to welcome you and your visitors in our spacious modern reception.



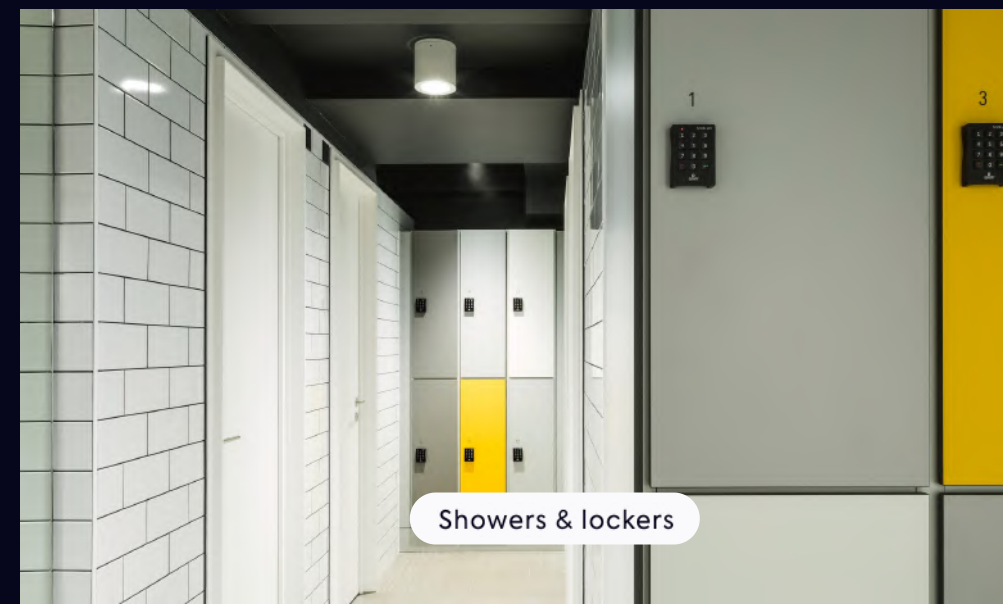
Rooftop terrace



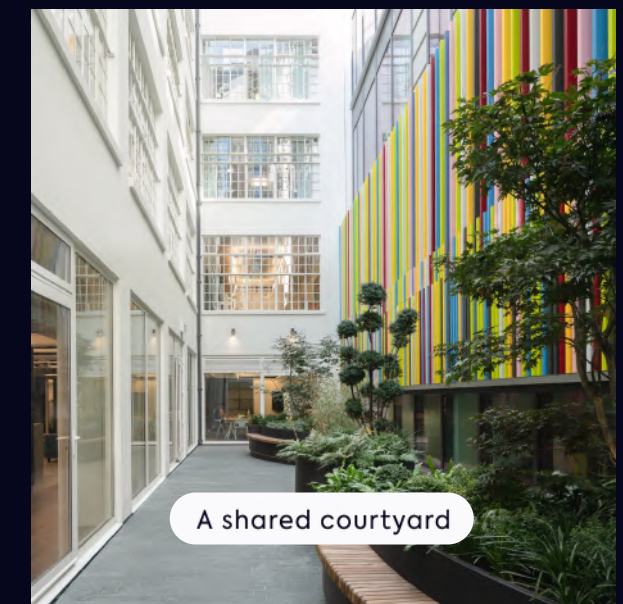
Cycle storage



Welcoming reception

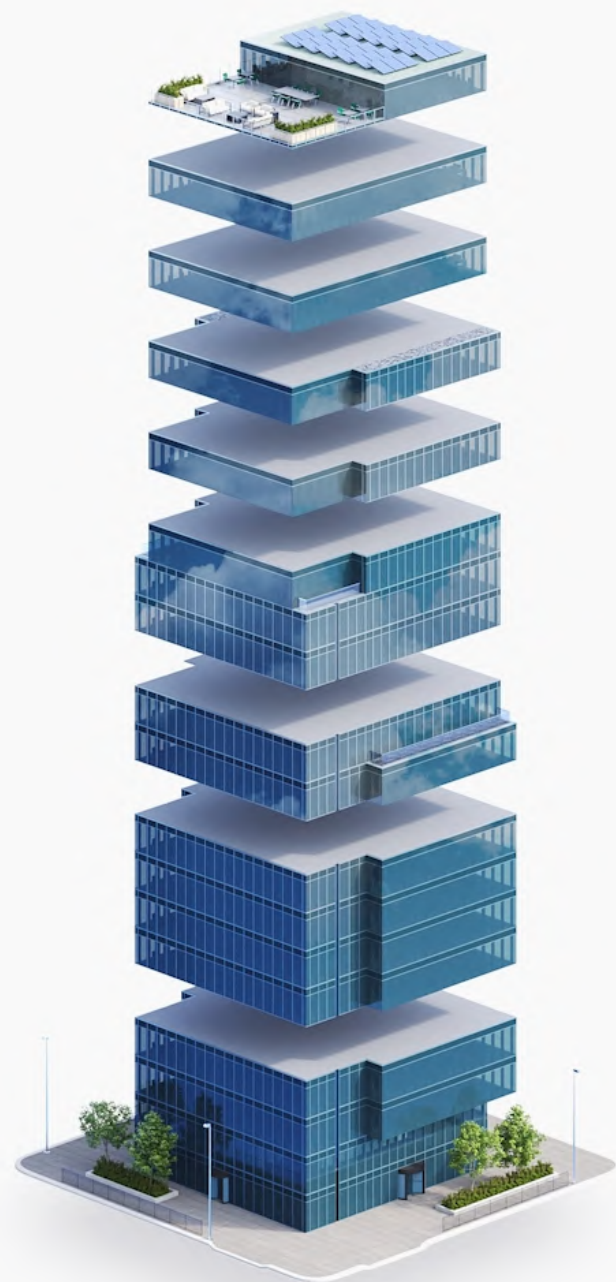


Showers & lockers



A shared courtyard

It's all included in one bill, no hidden extras



- Events, Food and Beverages
- Security
- IT Connectivity and Support
- Utilities
- Cleaning and Maintenance
- Fully Furnished Workspace
- Building Service Charge
- Business rates
- Rent

6 reasons to choose GPE Fully Managed



1 – Fully managed and fully yours

Say hello to a furnished workspace that's exclusively yours. Our Fully Managed service is a truly hassle-free experience.

[How we make it hassle-free](#)



2 – All-in-one bill with no hidden extras

Say goodbye to multiple bills. Each month you'll receive one all-inclusive bill from us, and, your bill remains fixed for your contract period.

[See what's included](#)



3 – Relax, you're in safe hands

We've been doing this for a long time. Our in-house experts curate the perfect experience, so you can enjoy market-leading workspaces. We own and manage our buildings, so you'll always deal directly with us.

[Learn more about us](#)



4 – Plug in and go – your tech's all sorted

You get safe, secure and ultra-fast wireless connectivity so you can work seamlessly from day one, with IT help on-hand. Everyone gets access to sesame™, your award-winning workspace app.

[Head over to the tech](#)



5 – Working towards a better world

As an environmentally-conscious company, we prioritise sustainability and refuse to engage in greenwashing. We're working towards being a net zero carbon business by 2030.

[How we're reducing our impact](#)



6 – Exceptional service as standard





Your people are our priority. It's why we've developed our customer promise – the values by which we operate – so we can deliver you a great experience.



Availability schedule

Let's get down to the details...

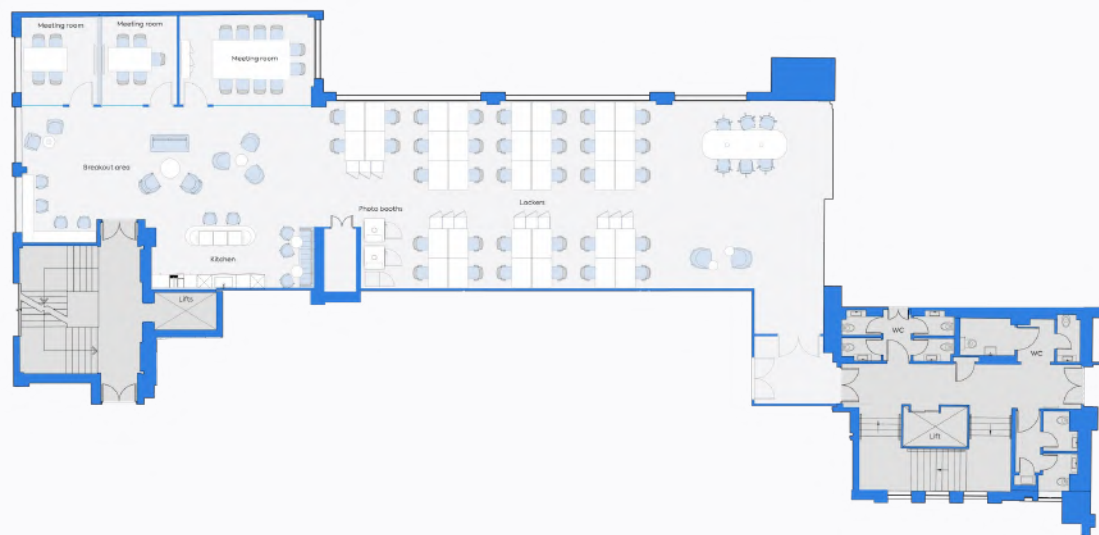
The details

Floor	Configuration	Max occupancy	Sq ft	Floorplan	Key features	Availability
North	34 desks + 3 meeting rooms	48	2,875		Large kitchen area and multiple breakouts	 July 2024
South	36 desks + 3 meeting rooms	54	3,285		Large meeting room, spacious kitchen and multiple breakouts	 July 2024

Floorplan

3rd Floor North, Elsley House

-  Fitzrovia
-  2,875 sq ft
-  48 maximum occupancy
-  34 current desks
-  3 meeting rooms
-  Breakout areas
-  2 phone booths
-  Kitchen
-  Wine fridge
-  Coffee machine



[Contents](#)

Elsley House

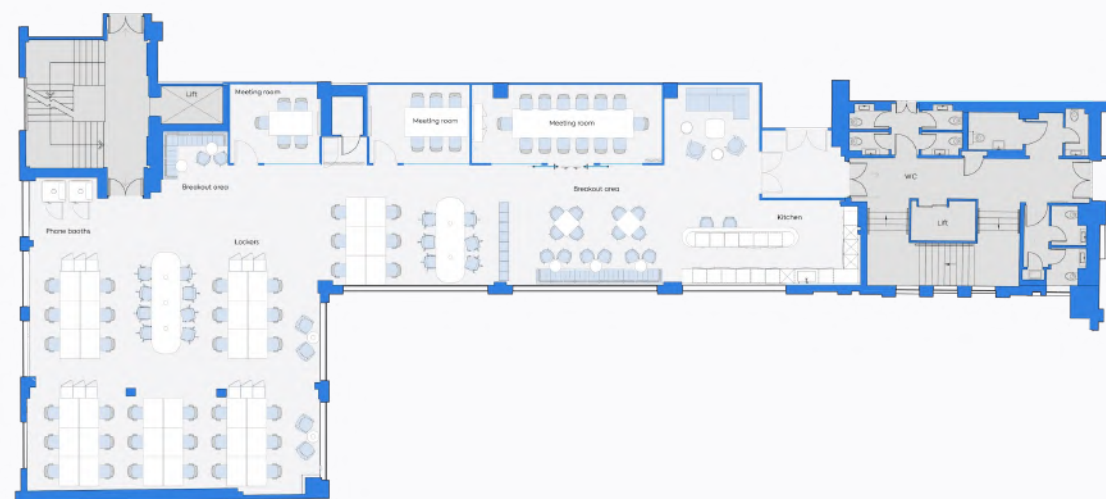
[View/download 2D floorplan](#)

*This floorplans colour scheme and furnishings are for illustrative purposes only.

Floorplan

3rd Floor South, Elsley House

-  Fitzrovia
-  3,285 sq ft
-  54 maximum occupancy
-  36 current desks
-  3 meeting rooms
-  Breakout areas
-  2 phone booths
-  Kitchen
-  Wine fridge
-  Coffee machine



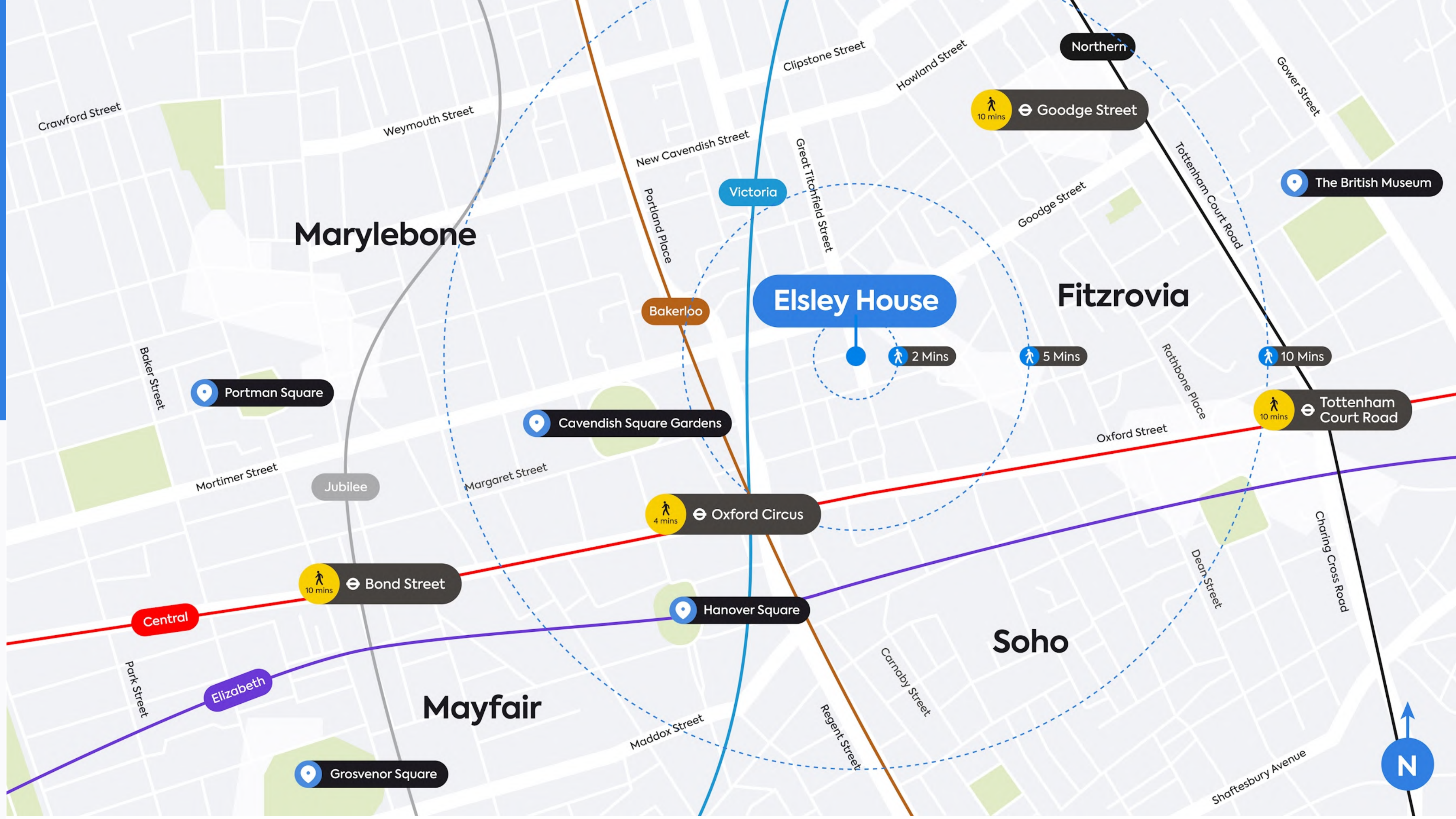
[Contents](#)

Elsley House

[View/download 2D floorplan](#)

*This floorplans colour scheme and furnishings are for illustrative purposes only.

Truly Connected



Elsley House is not only a top-quality workspace but is also in a prime location, with Oxford Circus, Bond Street and Tottenham Court underground stations on your doorstep. You are just minutes away from the Victoria, Bakerloo and Central lines.

Walking Distance

- Oxford Circus 4 mins** (Victoria, Bakerloo, Central lines)
- Bond Street 10 mins** (Victoria, Bakerloo, Central lines)
- Tottenham Court Road 10 mins** (Victoria, Bakerloo, Central lines)
- Godege Street 10 mins** (Northern line)



Pollocks Toy Museum



Cavendish Square



Drunch



Charlotte Street Hotel



The Oxford Market



Oxford Street



Stylish
Fitzrovia

Tried and tasted

Within

10

minutes

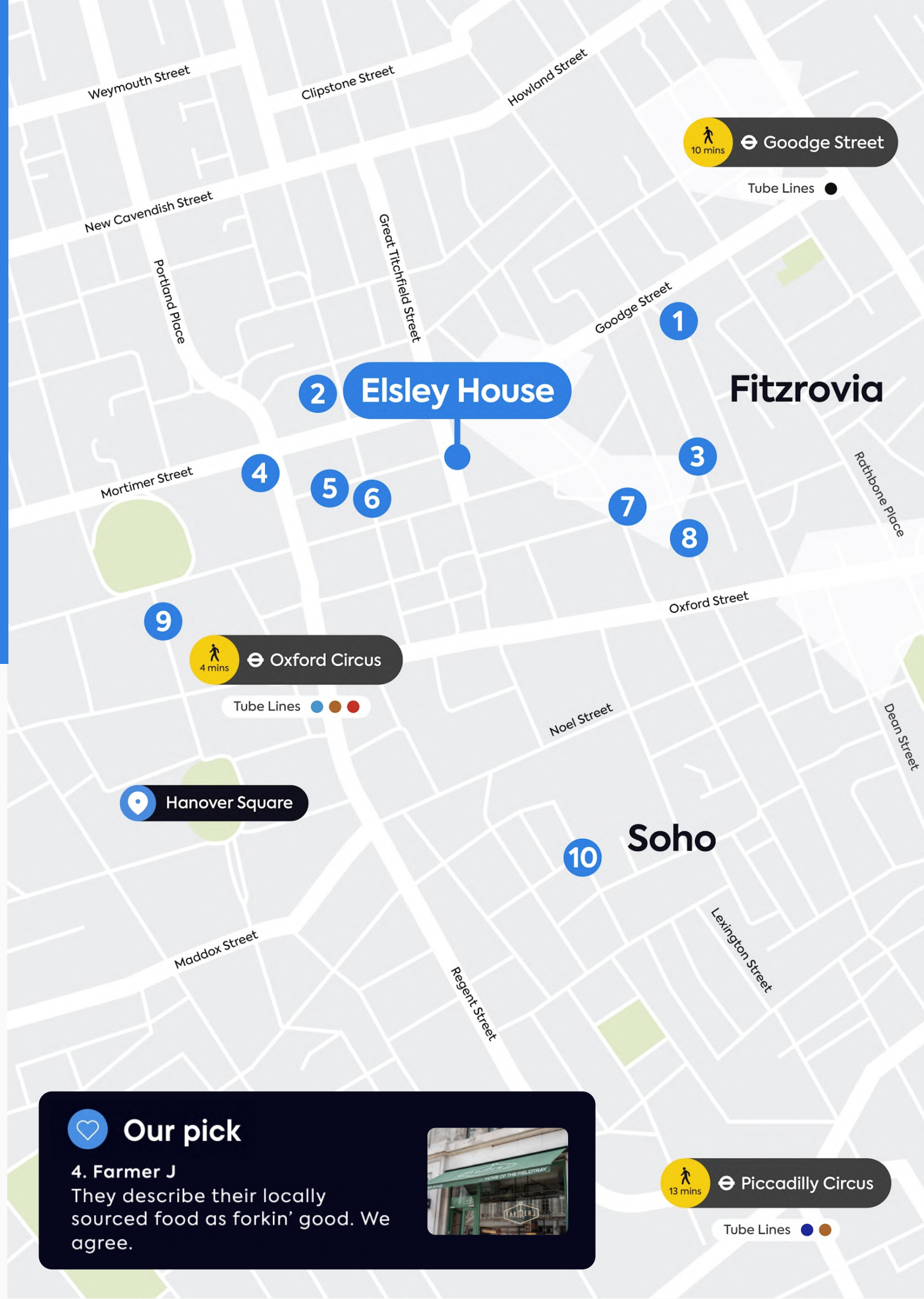


Highlights

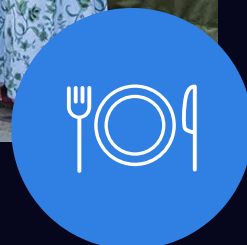
- 1 Mr Fogg's House of Botanicals
- 2 Riding House Café
- 3 The Bricklayers Arms
- 4 Farmer J
- 5 Kiss the Hippo Coffee
- 6 Faros
- 7 Kaffeine
- 8 Circolo Popolare
- 9 Market Halls
- 10 Social Eating House

Our pick

4. **Farmer J**
They describe their locally sourced food as forkin' good. We agree.



Good food



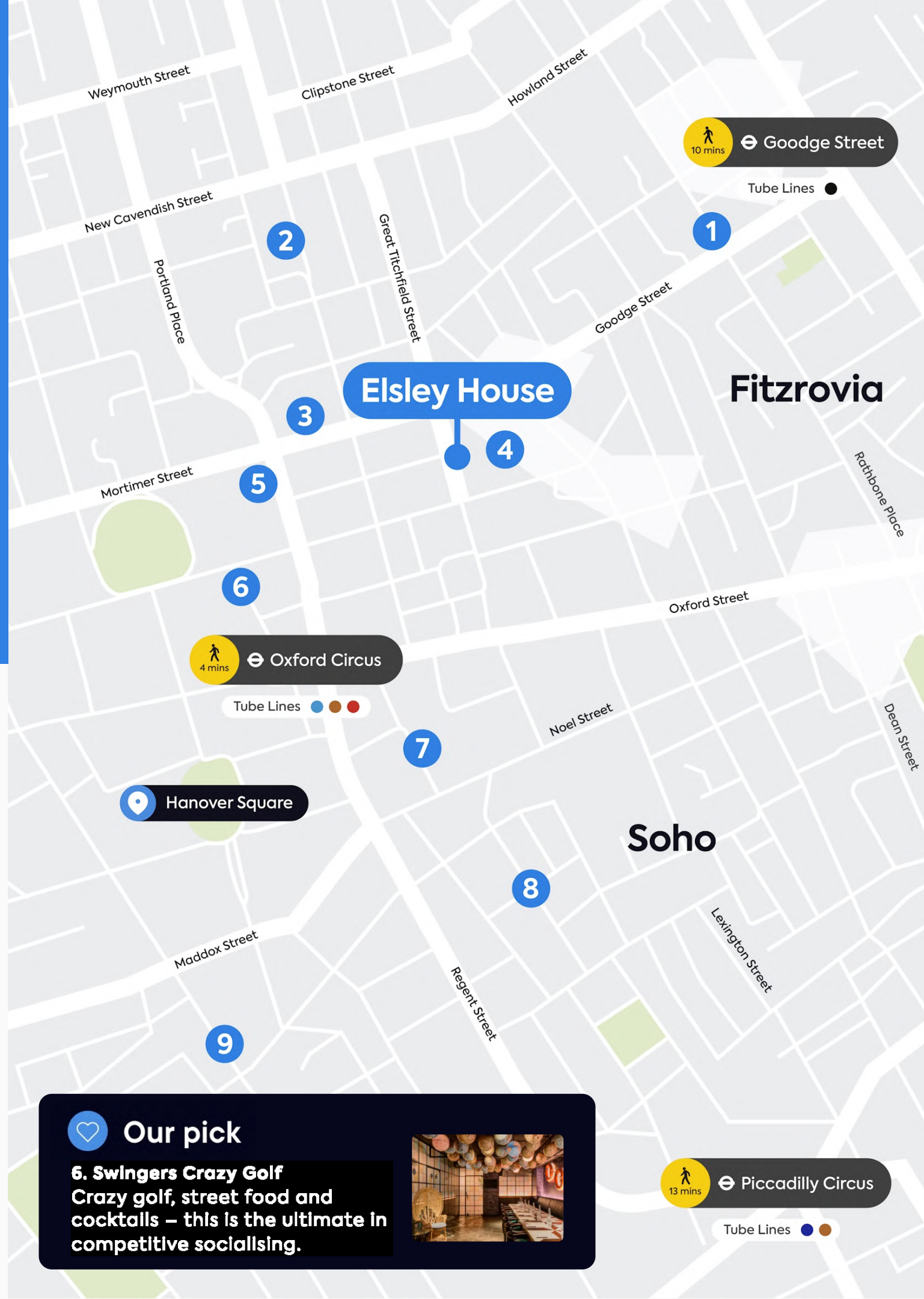
The food scene near Elsley House is strong, so you never have to wander far when hunger strikes. For great coffee give Kiss the Hippo a try, for a classic pub lunch dive into The Bricklayers Arms, or enjoy outrageously good Italian food at Circolo Popolare.

Spoilt for choice

Within
10
minutes




- Highlights**
- 1 Pollocks Toy Museum
 - 2 Java Whiskers Cat Café
 - 3 Psyche
 - 4 The Cartoon Museum
 - 5 Regent Street Cinema
 - 6 Swingers Crazy Golf
 - 7 The London Palladium
 - 8 Carnaby Street
 - 9 Halcyon Gallery



Our pick

6. Swingers Crazy Golf
Crazy golf, street food and cocktails – this is the ultimate in competitive socialising.




Things to do



Elsley House is surrounded by the iconic and the curious. Art lovers, theatre lovers, toy lovers and fun lovers... whatever your passion there are amazing finds to be discovered.

On your doorstep

Within

10

minutes

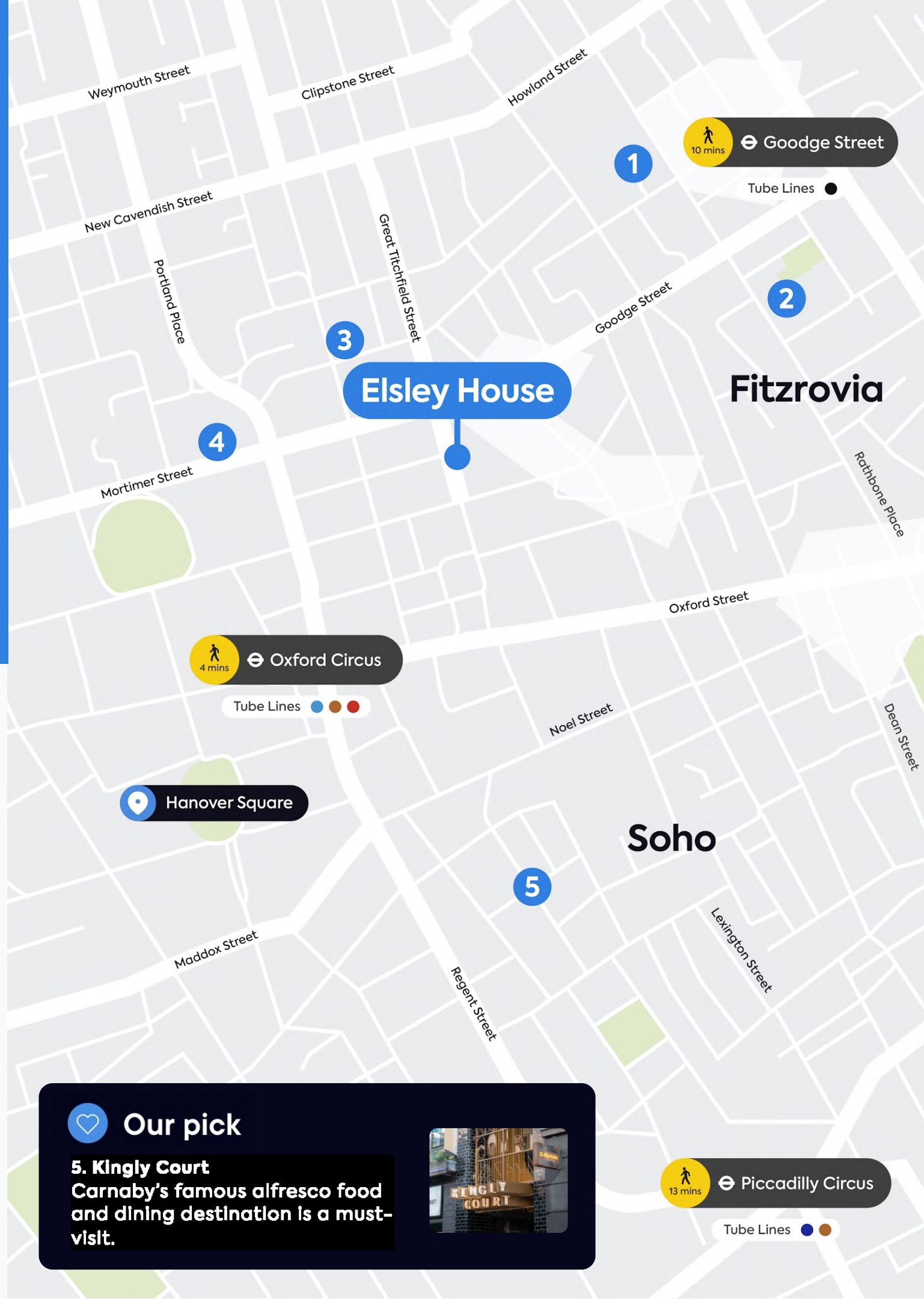


Highlights

- 1 The Fitzrovia Mural
- 2 Goode Flowers
- 3 Attendant Coffee Roasters
- 4 Chaun Spa at The Langham
- 5 Kingly Court

Our pick

5. Kingly Court
Carnaby's famous alfresco food and dining destination is a must-visit.



Hidden Gems

There are plenty of spots that the locals keep for themselves, each of which add to the area's unique charm. And if you decide to make Elsie House your new workspace, you'll be one of those in the know.

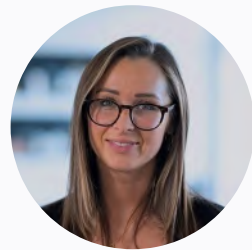
Get in touch

We hope we've piqued your interest, but it's only just the beginning.
We'd love to show you more. Get in touch to book your viewing today.



David Korman

+44 (0) 7435 939 956
david.korman@gpe.co.uk



Grace Tomlinson

+44 (0) 7871 678 728
grace.tomlinson@gpe.co.uk



Molly Maguire

+44 (0) 7887 841 816
molly.maguire@gpe.co.uk

Talk to us



**Find a space that's fully
yours. More locations
across London.**

See availability