



10 Cork Street, London W1S 3LW

This is 10 Cork Street

A Fully Managed workspace
where your people are our priority.

gpe.co.uk/portfolio/10-cork-street

Contents

03 What's in your building



04 Why us



06 Availability schedule



07 Floorplan

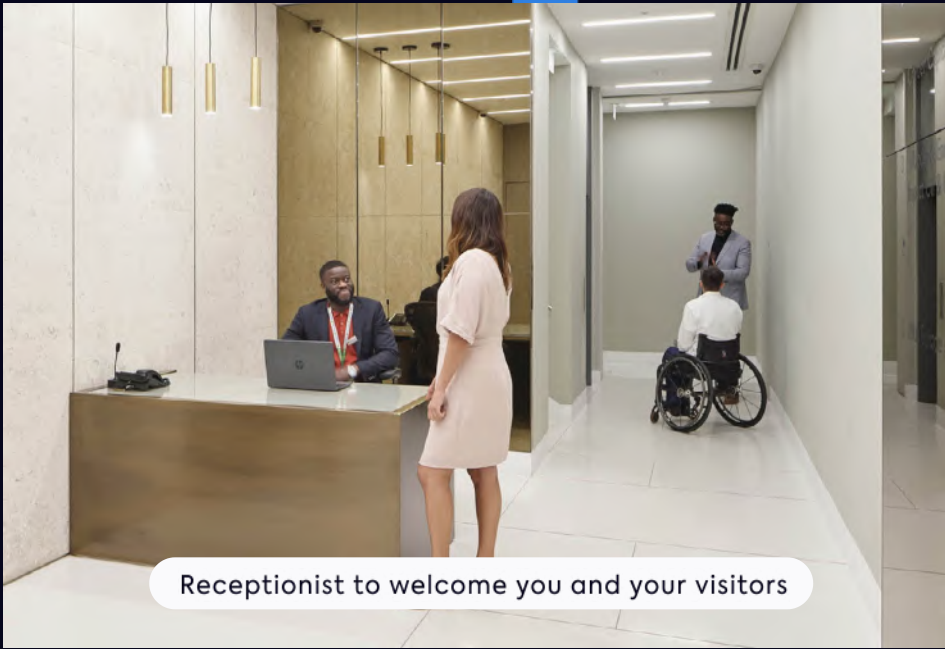


09 Location



10 Get in touch





Receptionist to welcome you and your visitors



Boutique workspaces woven into the fabric of Mayfair

Designed with the wellbeing of your people in mind, everything about 10 Cork Street is a cut above. Call this statement building home and elevate your business to the lofty heights of its surroundings.



Breakout space to collaborate with colleagues

What's in your building



Showers



Cycle storage



A warm welcome

Receptionist to welcome you and your visitors.



SKA Gold

Rated for the building's sustainable fit-out.



Wi-Fi 6

Ready for ultra-fast connectivity.



Cycle storage

5 secure spaces to end your journey by bicycle and 10 lockers to safely store your belongings.



Private networks

For each workspace with 1GB switches, firewall and flood wired CAT 6 cabling.



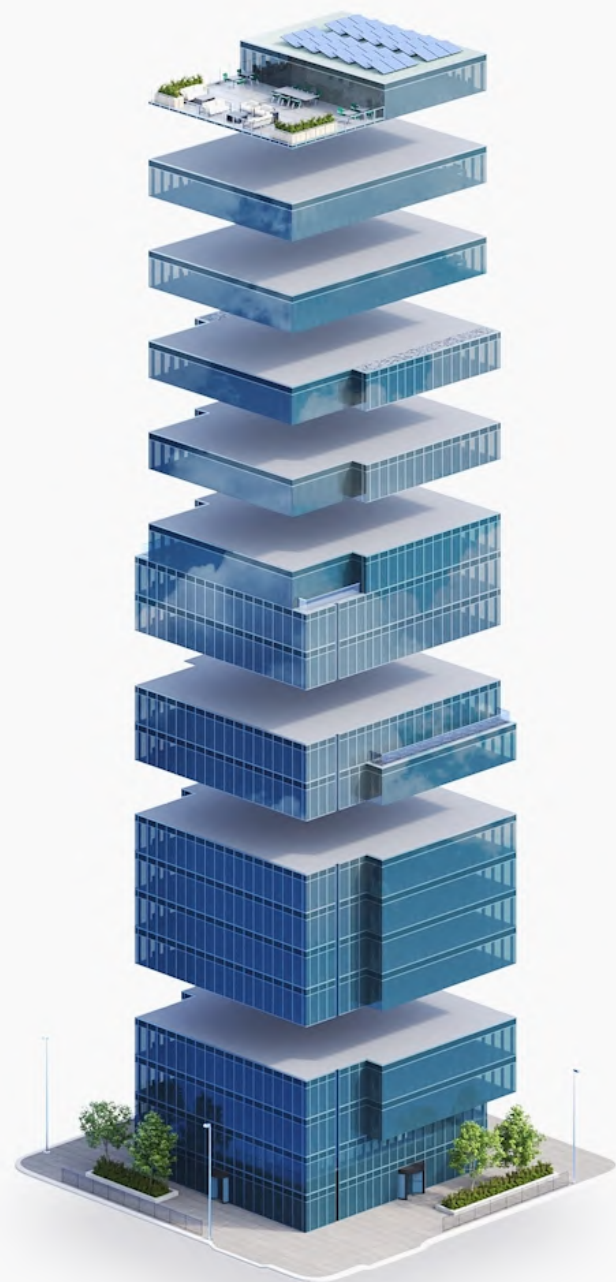
Shower cubicles

2 shower pods available to all customers.

Contents

10 Cork Street

It's all included in one bill, no hidden extras



- Events, Food and Beverages
- Security
- IT Connectivity and Support
- Utilities
- Cleaning and Maintenance
- Fully Furnished Workspace
- Building Service Charge
- Business rates
- Rent

6 reasons to choose GPE Fully Managed



1 – Fully managed and fully yours

Say hello to a furnished workspace that's exclusively yours. Our Fully Managed service is a truly hassle-free experience.

[How we make it hassle-free](#)



2 – All-in-one bill with no hidden extras

Say goodbye to multiple bills. Each month you'll receive one all-inclusive bill from us, and, your bill remains fixed for your contract period.

[See what's included](#)



3 – Relax, you're in safe hands

We've been doing this for a long time. Our in-house experts curate the perfect experience, so you can enjoy market-leading workspaces. We own and manage our buildings, so you'll always deal directly with us.

[Learn more about us](#)



4 – Plug in and go – your tech's all sorted

You get safe, secure and ultra-fast wireless connectivity so you can work seamlessly from day one, with IT help on-hand. Everyone gets access to sesame™, your award-winning workspace app.

[Head over to the tech](#)



5 – Working towards a better world

As an environmentally-conscious company, we prioritise sustainability and refuse to engage in greenwashing. We're working towards being a net zero carbon business by 2030.

[How we're reducing our impact](#)



6 – Exceptional service as standard



Your people are our priority. It's why we've developed our customer promise – the values by which we operate – so we can deliver you a great experience.



Availability schedule

Let's get down to the details...

The details

Floor	Configuration	Max occupancy	Sq ft	Floorplan	Key features	Availability
5th	16 desks + 2 meeting rooms + 1 private office	36	1,795		Premium space with multiple meeting rooms	 Recently let

Floorplan

5th Floor, 10 Cork Street

-  Mayfair
-  1,795 sq ft
-  36 maximum occupancy
-  16 current desks
-  2 meeting rooms
-  Breakout area
-  Welcome lounge
-  Private office
-  Kitchen
-  Coffee machine



[View/download 2D floorplan](#)

[Contents](#)

10 Cork Street



*This floorplans colour scheme and furnishings are for illustrative purposes only.

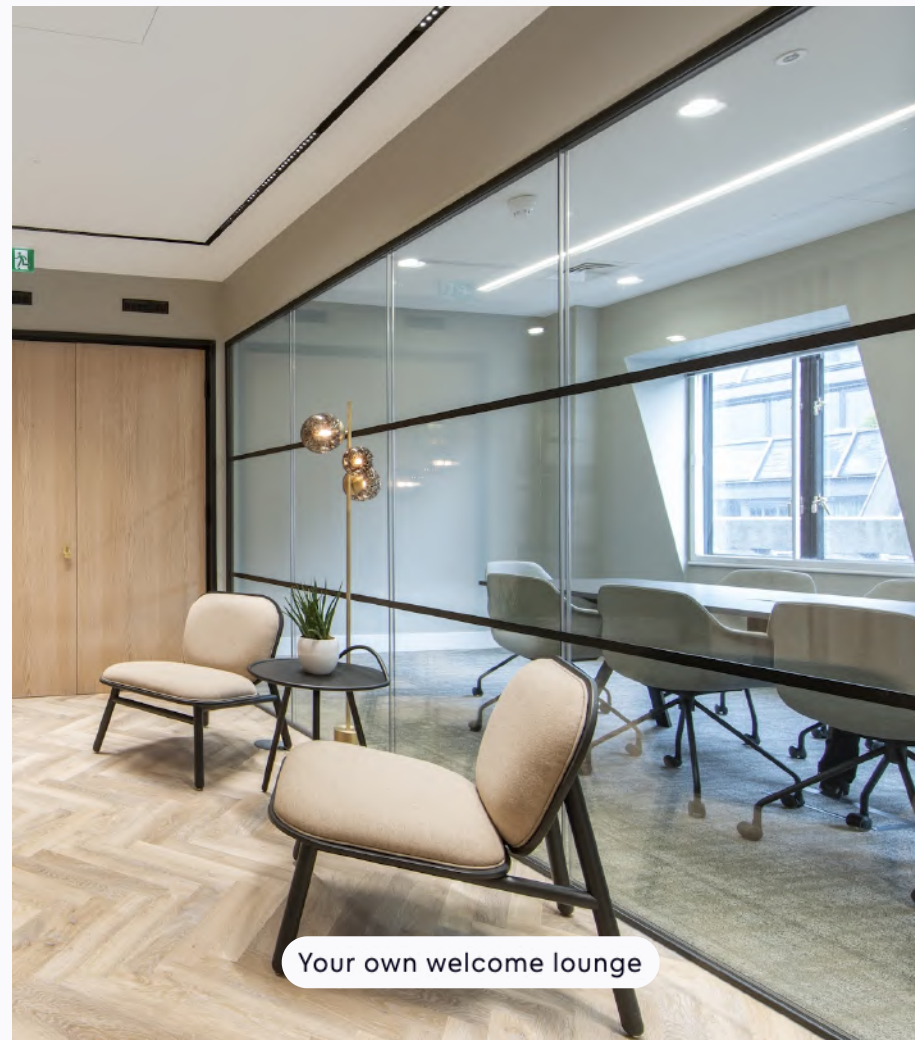
5th Floor



Your own kitchen



Your own meeting rooms

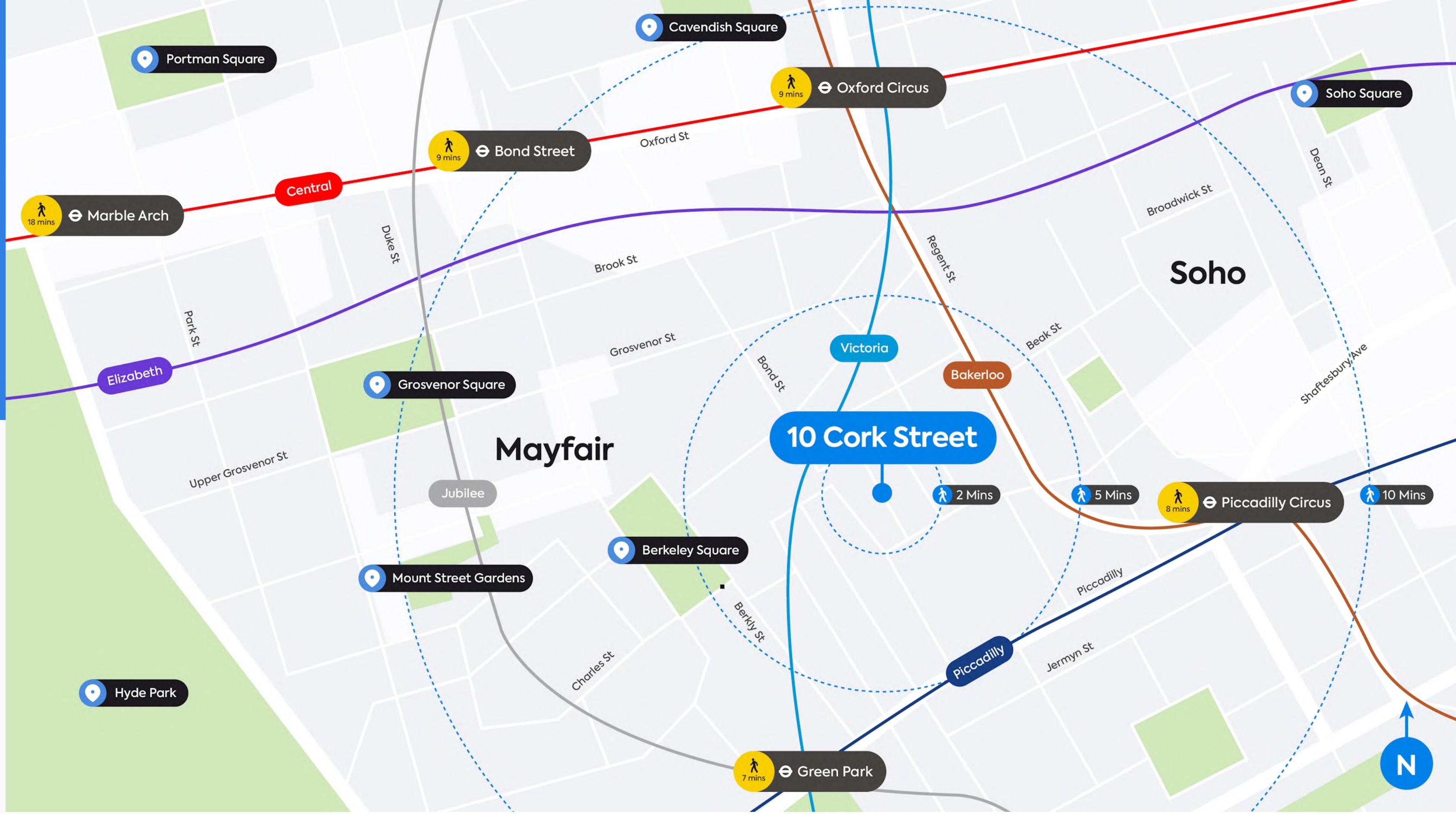


Your own welcome lounge



Your own desk space

Truly Connected



When we say you're in the heart of the city, we really mean it. Just eight minutes from the office is Bond Street station and the Elizabeth Line. As well as great access to the rest of London, this is your gateway to all of the capital's airports.

- Walking Distance** (Icon: Blue circle with white walking figure)
- Bond Street 6 mins** (Icons: Red, Purple, Grey, Tube)
- Green Park 7 mins** (Icons: Blue, Grey, Tube)
- Marble Arch 7 mins** (Icons: Red, Tube)
- Piccadilly Circus 8 mins** (Icons: Brown, Blue, Tube)
- Oxford Circus 12 mins** (Icons: Brown, Red, Blue, Tube)



Tried and tasted

Within

10

minutes



Highlights

- 1 Arabica
- 2 Masons Arms
- 3 Pollen Street Social
- 4 Pastaio
- 5 Farm Girl Café
- 6 Cecconi's
- 7 Sexy Fish
- 8 Aubaine
- 9 Noxy Brothers
- 10 Shepard Market Wine House

Marylebone

9 mins Bond Street
Tube Lines ● ●

9 mins Oxford Circus
Tube Lines ● ● ●

1 Brook St

2 3

4 5

10 Cork Street

8 mins Piccadilly Circus
Tube Lines ● ●

7 8

9

7 mins Green Park
Tube Lines ● ● ●

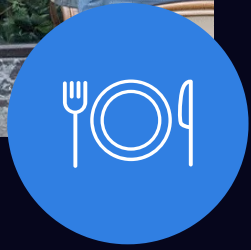
St James's Square

Our pick

6. Cecconi's
This modern day Italian restaurant is cosmopolitan Mayfair at its best.



Good food



Unsurprisingly, Mayfair is a mecca for world-class dining. You'll find cuisine from around the world, created with style and with something for every occasion – even the classic pub food is a cut above the rest.

Food & Drink

Things to do

Hidden Gems

Spoilt for choice

Within

10

minutes

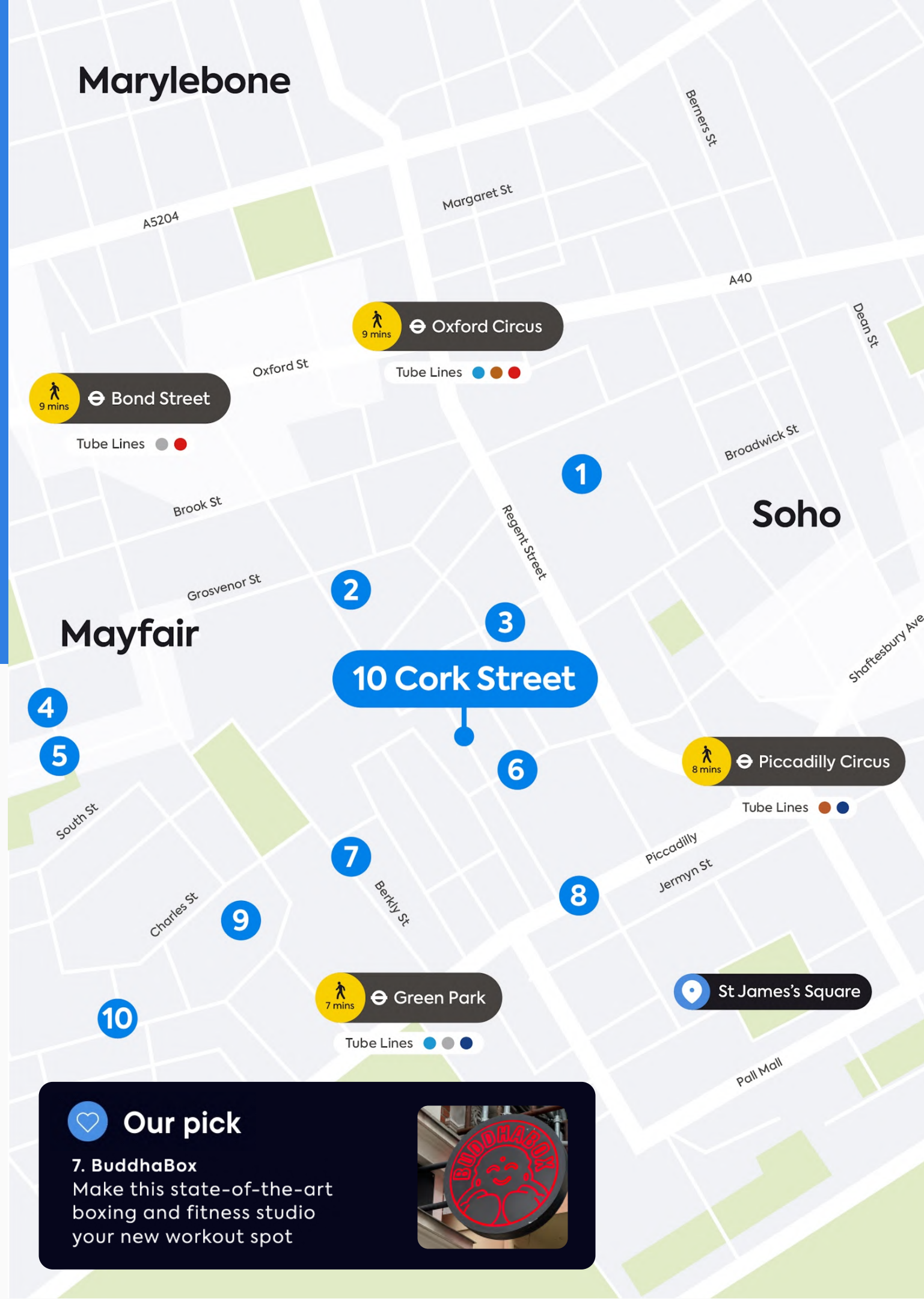


Highlights

- 1 Carnaby Street
- 2 Halycon Gallery
- 3 Saville Row
- 4 Aman Spa
- 5 The Connaught Bar
- 6 Royal Academy of Arts
- 7 BuddhaBox
- 8 Fortnum & Mason
- 9 Third Space
- 10 Curzon Cinema

Our pick

7. BuddhaBox
Make this state-of-the-art boxing and fitness studio your new workout spot



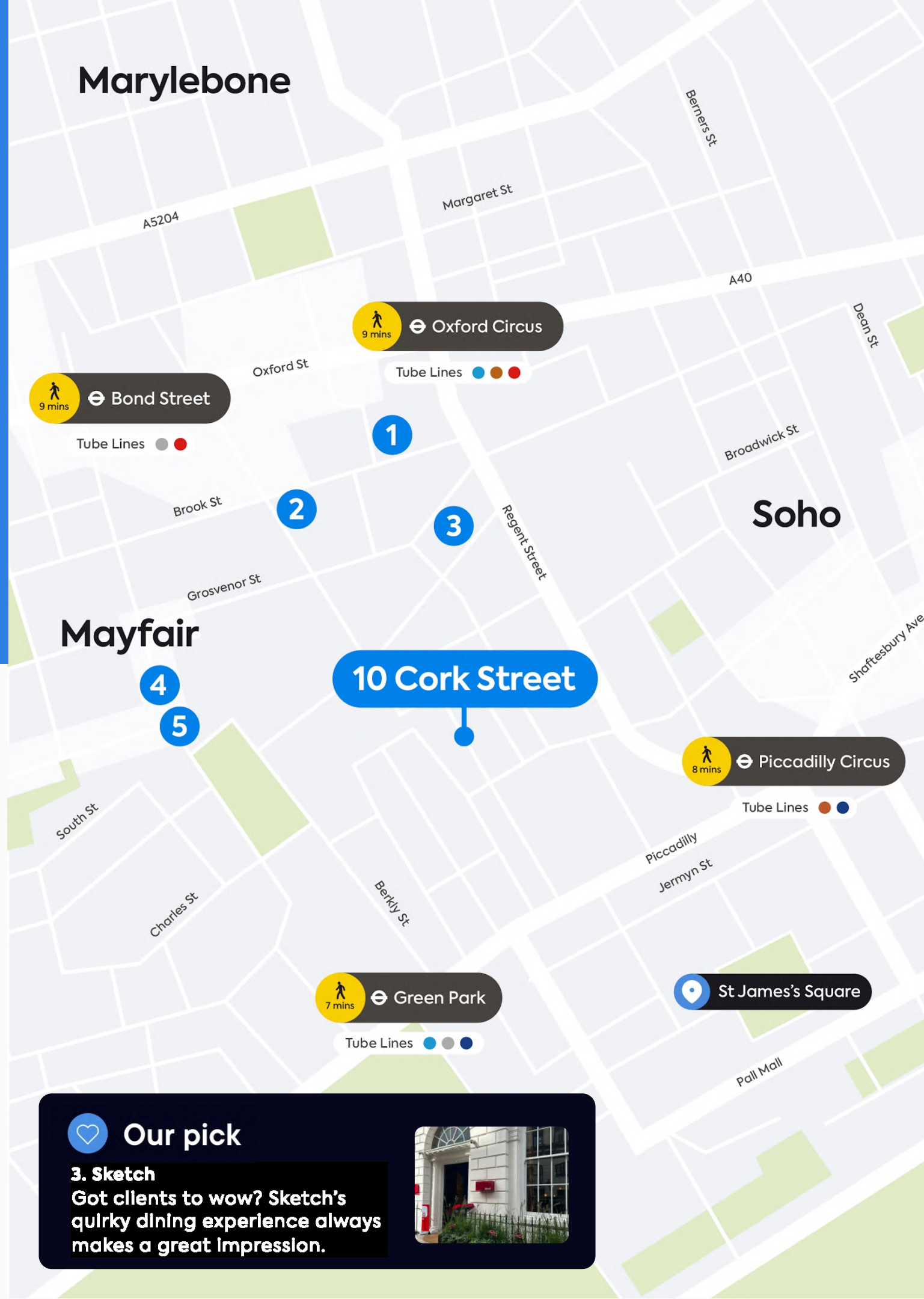
Things to do



Given the Mayfair location of Cork Street, whatever you want to do, you'll do it in style. From retail therapy and culture to fitness and relaxation, there's everything to elevate your work/ life balance.

On your doorstep

Within
10
minutes



- Highlights**
- 1 Hanover Square
 - 2 Lancashire Court
 - 3 Sketch
 - 4 Mount Street Printers
 - 5 Hedonism Wine's

Our pick

3. Sketch
Got clients to wow? Sketch's quirky dining experience always makes a great impression.



Hidden Gems

There's more to Mayfair than big designer names – the area has real character just waiting to be discovered. From one-of-a-kind artisan and boutique retailers to stunning public spaces, explore and you'll be rewarded.

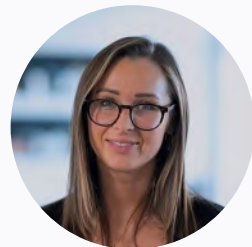
Get in touch

We hope we've piqued your interest, but it's only just the beginning.
We'd love to show you more. Get in touch to book your viewing today.



David Korman

+44 (0) 7435 939 956
david.korman@gpe.co.uk



Grace Tomlinson

+44 (0) 7871 678 728
grace.tomlinson@gpe.co.uk



Molly Maguire

+44 (0) 7887 841 816
molly.maguire@gpe.co.uk

Talk to us



**Find a space that's fully
yours. More locations
across London.**

See availability